



# SBC6410 Camera User manual

Ver 0.1

---

Date: 2011-7-05

[www.armdesigner.com](http://www.armdesigner.com)



Rev	Date	Description
V0.1	2011-7-05	Initial version

## **1. Introduction**

### **1.1. About this Manual**

This manual is intended to provide the user with an overview of the board and benefits, complete features specifications, and set up procedures. It contains important safety information as well.

### **1.2. Feedback and Update to this Manual**

To help our customers make the most of our products, we are continually making additional and updated resources available on the Boardcon website ([www.armdesigner.com](http://www.armdesigner.com)).

These include manuals, application notes, programming examples, and updated software and hardware. Check in periodically to see what's new!

When we are prioritizing work on these updated resources, feedback from customers is the number one influence. If you have questions, comments, or concerns about your product or project, please do not hesitate to contact us at [support@armdesigner.com](mailto:support@armdesigner.com).

### **1.3. Limited Warranty**

Boardcon warrants this product to be free of defects in material and workmanship for a period of one year from date of buy. During this warranty period Boardcon will repair or replace the defective unit in accordance with the following process:

A copy of the original invoice must be included when returning the defective unit to Boardcon. This limited warranty does not cover damages resulting from lightning or other power surges, misuse, abuse, abnormal conditions of operation, or attempts to alter or modify the function of the product.

This warranty is limited to the repair or replacement of the defective unit. In no event shall Boardcon be liable or responsible for any loss or damages, including but not limited to any lost profits, incidental or consequential damages, loss of business, or anticipatory profits arising from the use or inability to use this products.

Repairs made after the expiration of the warranty period are subject to a repair charge and the cost of return shipping. Please contact Boardcon to arrange for any repair service and to obtain repair charge information.

In camera\_test folder , there are two camera programs, such as **camera\_W35** and **camera\_A70**. If your screen is 7.0 inches, then choose **camera\_A70** as the camera program. If your screen is 3.5 inches, then choose **camera\_W35** as the camera program .How to test the camera steps are given below:

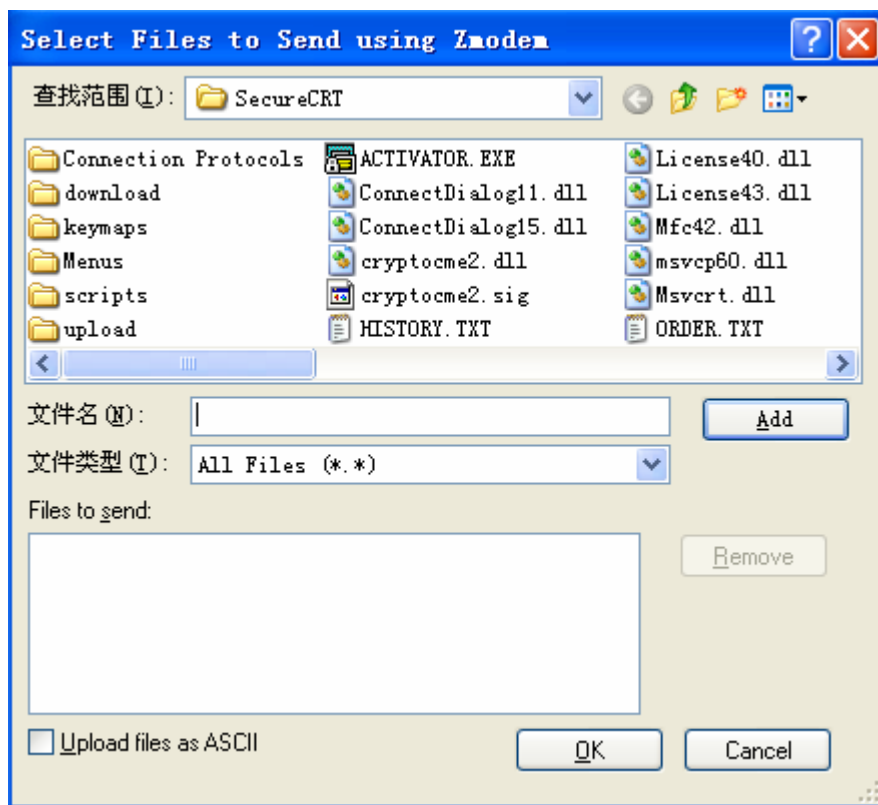
1. Open the **SecureCRT** software, run the following command into /sbin directory of target board.

```
[root@EmbedSky /]# cd /sbin
```

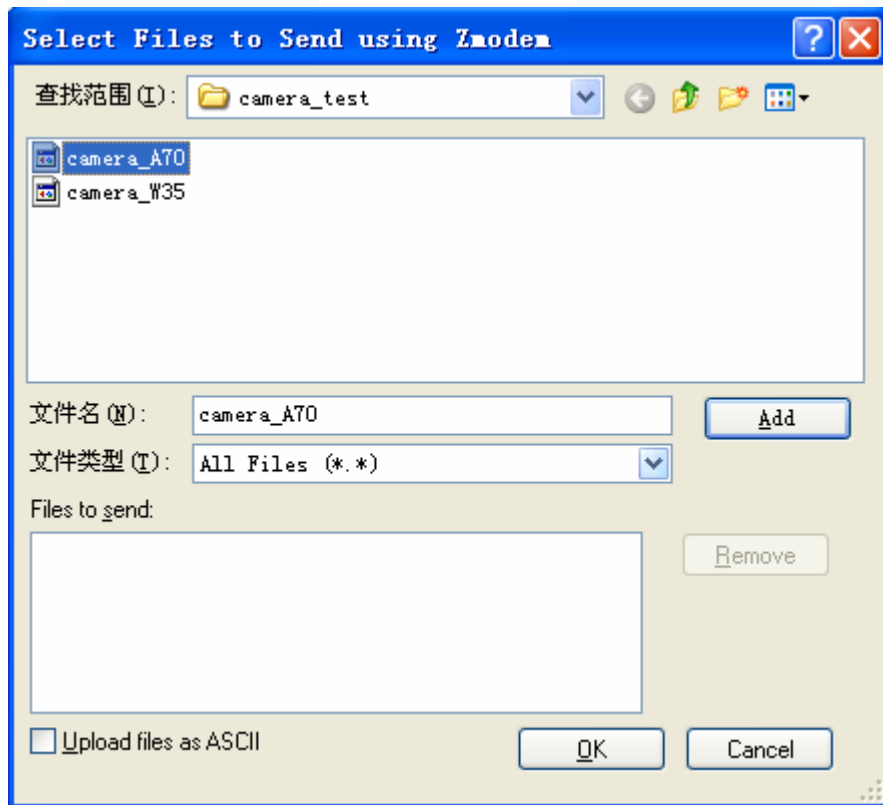
2. Copy **camera\_A70** to current directory, run the following command:

```
[root@EmbedSky /sbin]# rz
```

Then you will see a dialog box as below:



Find **camera\_A70**, and **add** it.



Finally, click on the **OK** button

3. Modify the **camera\_A70** access permission, run the following command:

```
[root@EmbedSky /sbin]# chmod 777 camera_A70
```

4. Run the following command in the console, then you will see real video on the screen.

```
[root@EmbedSky /sbin]# camera_A70
```

```
[root@Embedsky /]# cd /sbin
[root@Embedsky /sbin]# rz
rz ready. Type "sz file ..." to your modem program

starting zmodem transfer. Press Ctrl+C to cancel.
Transferring camera_A70...
 100%   10 KB   5 KB/s 00:00:02      0 Errors
 100%   10 KB   5 KB/s 00:00:02      0 Errors

sz 3.48 01-27-98 finished.
[root@EmbedSky /sbin]# chmod 777 camera_A70
[root@Embedsky /sbin]# camera_A70
__video_do_ioctl 642
__video_do_ioctl 642
__video_do_ioctl 642
__video_do_ioctl 642
capability=0x0, flags=0, base=0x00000000
__video_do_ioctl 642
__video_do_ioctl 642
__video_do_ioctl 642
capability=0x0, flags=0, base=0x00000000
__video_do_ioctl 642
__video_do_ioctl 642
__video_do_ioctl 642
V4L2 : Camera Input(V4L2_INPUT_TYPE_CAMERA).
^C
[root@Embedsky /sbin]#
```